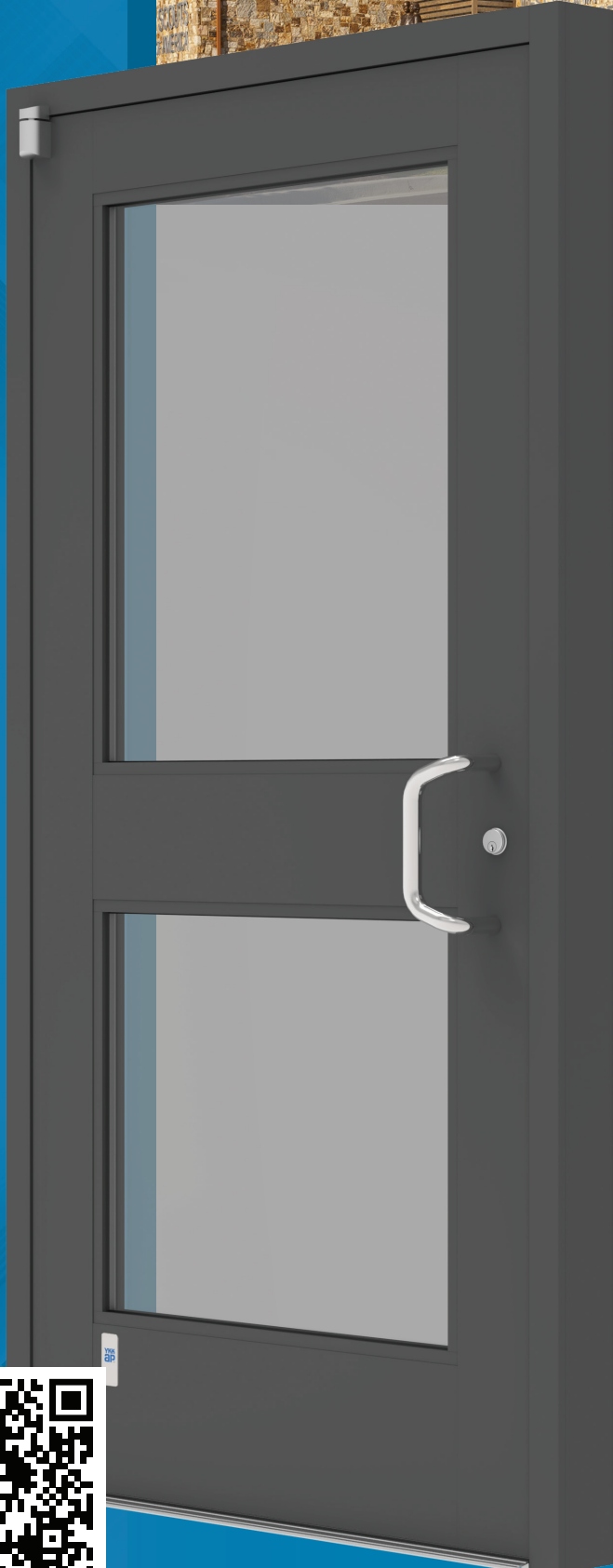


# YKK AP<sup>®</sup>

www.ykkap.com



JW & Hazel Ruby West Welcome Center - Mount Hope, WV



## 40M/50M

### Wide Stile Monumental Commercial Entrance Systems

These Monumental entrances offer an abundance of design applications ideal for use in high traffic areas. They feature 4" and 5" wide stile options and are produced with a typical 3/16" wall thickness providing exceptional durability. VersaJamb<sup>®</sup>, our unique reinforced tubular door frame, allows for side lite glazing without shear clips while maintaining the structural integrity of transom frames. The 40M/50M entrances include a removable vertical mullion option for pairs. Standard hardware options include the Smart Series ergonomic Push/Pull, Von Duprin<sup>®</sup> 33, 99, and YKK AP standard touch bar exit devices.

**Von Duprin is a registered trademark of SCHLAGE LOCK COMPANY LLC2**

- Tested and manufactured well above standard grade and performance levels
- Single and paired door options
- Single or double acting options
- Integrates seamlessly with a variety of YKK AP storefront and curtainwall systems
- Variety of mid-rail size options
- Door Corners are mechanically joined and welded together
- Standard or Custom Door Sizes and Hardware Options are available

#### Door Leaf:

Glazing	Glass Setting	Installation
Inside/Outside	Center Set	Single or Pair



40M/50M SPECS		
<b>System Stiles</b>	4" - Wide and 5" - Wide	
<b>Door Config</b>	Inside & Outside Glazed / Center Set	
<b>Tested Glass</b>	1" IGU with Low-E (C.O.G. U-Factor: 0.29)	
Test	Results	Standards
<b>Air Infiltration</b>	<b>Single:</b> 0.50 CFM/FT <sup>2</sup> (1.10 m <sup>3</sup> /h·m <sup>2</sup> ) <b>Pair:</b> 1.00 CFM/FT <sup>2</sup> (1.10 m <sup>3</sup> /h·m <sup>2</sup> ) @ 6.24 PSF (299 Pa)	ASTM E 283
<b>Structural Uniform Load</b>	<b>40M Door</b> <b>Single:</b> 45 PSF <b>Pair:</b> 45 PSF <b>50M Door</b> <b>Single:</b> 65 PSF <b>Pair:</b> 65 PSF	ASTM E 330
<b>Structural Performance</b>	Door corner structural strength shall be tested per YKK AP's dual moment test procedure and certified by an independent testing lab to ensure corner integrity and weld compliance. Certified test procedures and results are available upon request.	

Finish Options	
Type	Standard
Factory Anodized	AAMA 612
Organic Paints	AAMA 2604 AAMA 2605

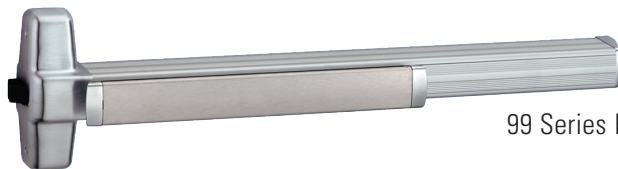
Midrail Sizes
Panic, 4", 7-1/2" and 10"
Door Subframe Options
Pocket & Flat for Curtain Wall, YES 45 TU, YWW 45 T and YES 60 FI/TU/XT

## Von Duprin® Exit Devices

These top quality custom hardware exit devices from Von Duprin® are perfectly suited for all applications that require emergency egress. They are ANSI Grade 1, carry the UL label and approved for Life Safety. Both the rim and concealed rod devices feature single point dogging and are available with electric actuation.



33 Series Exit Device



99 Series Exit Device

## Standard Entrance Hardware

### Smart Series Push/Pull Devices

The one inch diameter push/pull provides flexibility and occupant safety. The pull handle is open to permit access to the lock cylinder, but is slightly angled to provide a uniquely modern look. The push bar starts at the locking stile, but then has an ergonomic "S-Bend" toward the locking stile to bring the bar closer to the door where it is captured by an end cap. This innovative push bar also accommodates custom width openings.

H-1141/1142/1143 Push/Pull Device



H-1341/1541/1542 Pull Handles

### Exit/Panic Devices

The modern and economical standard touch bar exit devices are ideally suited for all applications that require emergency egress. The devices are ANSI Grade 1, carry the UL label and are approved for Life Safety. Both the rim and concealed devices feature single point dogging and are available with electric actuation.

P-54453 Rim Panic Device



P-55215 Mid-Panel Device

You can view all of our standard entrance hardware options by selecting the entrance hardware data sheets on our product guide at [www.ykkap.com](http://www.ykkap.com)



Additional information including CAD details, CSI specs, test reports and installation instructions are found on the Product Guide by clicking this link or visiting [www.ykkap.com/commercial/productguide](http://www.ykkap.com/commercial/productguide)