

# YKK AP<sup>®</sup>

www.ykkap.com



260 N. Josephine Street - Denver, CO

## YWW 60 TU

Thermally Broken Window Wall  
with Optional Slab Edge Cover

The **YWW 60 TU** is a 6-inch deep window wall glazing system designed for use in various multi-story applications. It includes an innovative slab edge cover that yields the beauty and appearance of a curtain wall application. The glass plane is set to the front to maximize energy efficiency. The thermal performance is further enhanced by YKK AP's ThermoBond Plus<sup>®</sup> thermal break technology.

- Inside, Outside and SSG Glazing Options
- SSG: 2-Sided Field & 4-Sided Shop/Unitized
- 1" Glazing Standard with 1/4" Infill Option
- Thermally Broken by ThermoBond Plus<sup>®</sup> Pour and De-Bridged Urethane Barriers
- Punched Opening or Slab Edge Floor-to-Floor
- Tubular Mullions & Head Receptor Options
- Integrates with our YKK AP Entrances

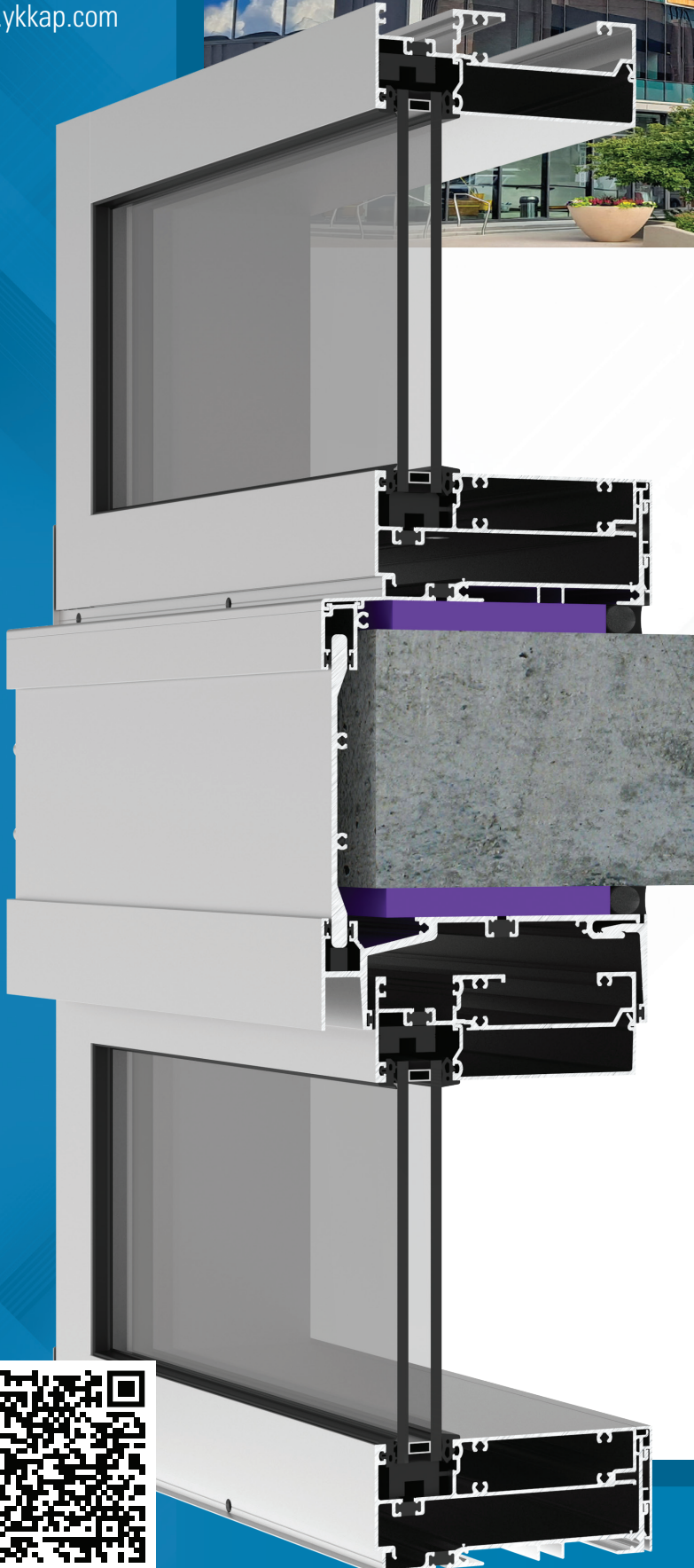
### Configuration:

Glazing	Glass Setting	Installation
Outside, Inside and SSG	Front Set	Screw Spline

### Thermal Values:

<b>U-Factor:</b>	Values as low as <b>0.33*</b>
<b>CRF:</b>	Minimum <b>65</b> frame and <b>63</b> glass

\*Based on NFRC 100. Lower values may be achieved through further simulation.



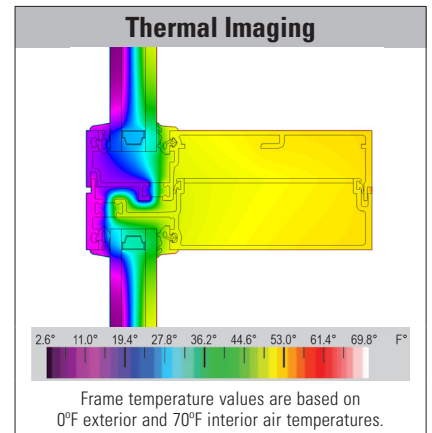
YWW 60 TU SPECS		
<b>Base Depth</b>	6" (without Slab Edge Cover)	
<b>Sightline</b>	2-1/4"	
<b>Config</b>	Outside, Inside or SSG Glazed / Front Set	
<b>Tested Glass</b>	1" IGU with Low-E (C.O.G. U-Factor: 0.29)	
Test	Results	Standards
<b>Air Infiltration</b>	0.06 CFM/FT <sup>2</sup> (1.10 m <sup>3</sup> /h·m <sup>2</sup> ) @ 6.24 PSF (299 Pa)	ASTM E 283
<b>Water Infiltration</b>	<b>Static:</b> 12 PSF (575 Pa) <b>Dynamic:</b> 12 PSF (575 Pa)	ASTM E 331 AAMA 501

Thermal Performance								
Mullion Depth (1" IGU)	U-Factor - BTU/hr·ft <sup>2</sup> ·°F						CRF*	
2-1/4" x 6"	0.41	0.39	0.38	0.36	0.34	0.33	65	63
<b>Center of Glass</b>	<b>0.30</b>	<b>0.28</b>	<b>0.26</b>	<b>0.24</b>	<b>0.22</b>	<b>0.20</b>	<b>Frame</b>	<b>Glass</b>
AAMA 507 & NFRC 100							AAMA 1503	

\*CRF numbers are from YWW 50 TU Testing

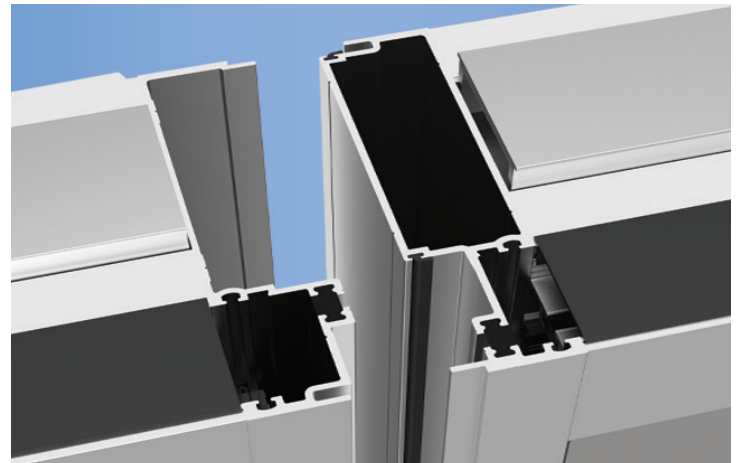
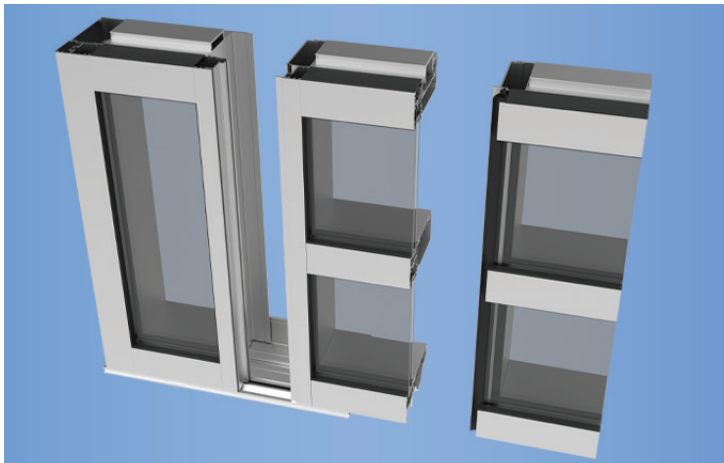
Finish Options	
Type	Standard
Factory Anodized	AAMA 612
Organic Paints	AAMA 2604 AAMA 2605

Various System Options	
Expansion Mullion, Slab Edge and Covers, Head Receptors, 90° and 135° Outside and Inside Mullions, Door Jamb and Transoms	



## Unitized Framework

The YWW 60 TU has a Pre-Glazed/Unitized option. By splitting the vertical mullions into male-female pieces, units can be pre-assembled off the job site and fitted together in sections on the job site. This makes installation quicker, and less materials taking up space out in the field.



## Thermally Broken

While the pour and de-bridge process economically delivers the desired level of energy conservation it has an inherent problem as the polyurethane material does not adhere well to the aluminum. This lack of adhesion has led to a phenomenon known as "dry shrinkage" which may lead to performance issues for the glazing system.

ThermaBond Plus® from YKK AP that greatly improves the adhesion of the polyurethane material to the aluminum extrusion. Combining science and technology, ThermaBond Plus® process resolves the problem of adhesion and the resulting dry shrinkage associated with typical poured and de-bridged systems.



Additional information including CAD details, CSI specs, test reports and installation instructions are found on the Product Guide by clicking this link or visiting [www.ykkap.com/commercial/productguide](http://www.ykkap.com/commercial/productguide)