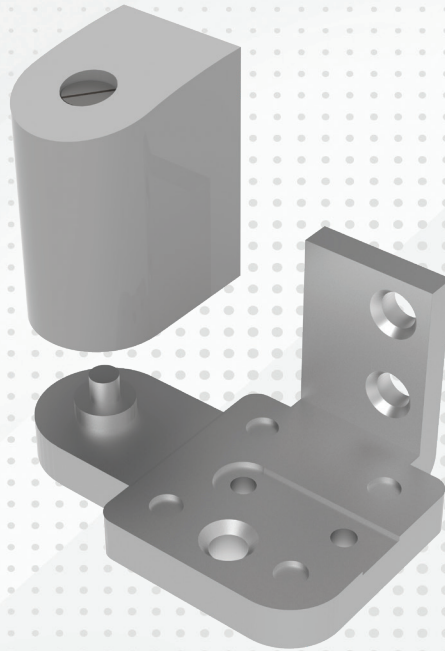
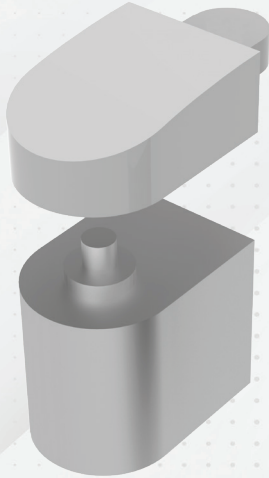


YKK AP[®]

Commercial
Standard Entrance
Hardware



Description

- Door and frame portion of top pivot assembly are die cast aluminum.
- Press fit bearing on the pivot frame portion is self-lubricating oilite bronze type.
- Spring loaded hardened steel dowel pivot pin in door portion completes assembly.
- **Door:** Cast aluminum with radial and thrust ball bearings; with vertical screw adjustment.
- **Frame portion (with threshold):** Aluminum pivot base with steel pivot; integral part of door frame and securely anchors frame and threshold to floor.
- **Frame portion (without threshold):** Stainless steel pivot plate with stainless steel pivot; plate fastened at three points directly to floor.

Application

- **Top offset pivot:** Mortised frame portion into header/ transom bar, attached with screws through extrusion and threaded into pivot block. Spring loaded pivot allows for easy installation and maintenance.
- **Bottom offset pivot:** Frame portion is used with threshold. On interior or vestibule doors not requiring threshold, floor mounted portion is used. Door portion provides vertical adjustment with both pivot pieces.
- Typical package for doors up to 7'-6" height; requires intermediate pivot for doors over 7'-6" high. Intermediate pivot can be specified for doors to 7'-0" height.

NOTE: Maximum door weight for pivots is 125lbs

YKK AP Part Numbers

H-2101: Right Hand (RH) Pivot Package

H-2102: Left Hand (LH) Pivot Package

Compatible Entrances

20D/35D/50D, 25T/35T/50T & 35HL/50HL

Material Composition

Aluminum with Stainless Steel Bearing & Pins

Finishes

Electrodeposition: 628 Clear or 335 Black

Hardware Vendor



Vendor Part or Series

Calibre PV-5000 Series

21-5014-00

H-2101 / H-2102

Standard Offset Pivot Package