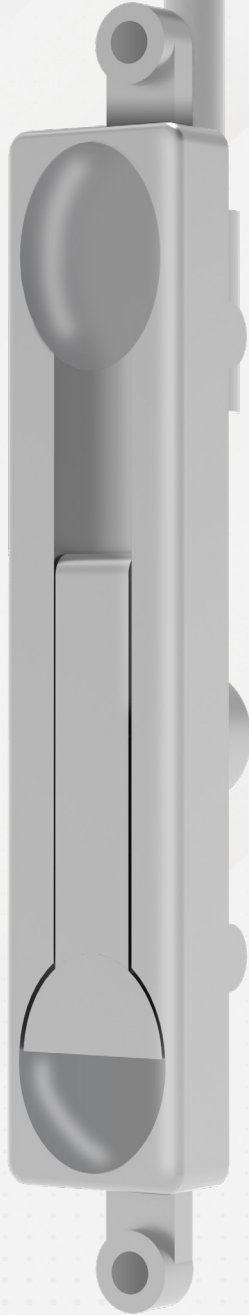




**YKK
AP**

Commercial
Standard Entrance
Hardware



Description

Made for the Inactive Leaf on Door Pairs

- Top and bottom bolts in inactive leaf provide two lock points allowing active door leaf to lock into inactive leaf.
- Flush bolts are flush mounted in door stile “edge.” for a clean look.

Compatible Entrances

All YKK AP Entrances

Material Composition

Aluminum Alloy and Mill

Finishes

Coated Finish: 628 Clear or 335 Black

Application

- Flushbolt Rod length for 12” Centerline of face installation.
- Solid 1/2” Steel Rod Bolt with beveled end for 9/16” x 1” slot
- Positive “U” joint actuator for a secure locking setup.

Hardware Vendor



Vendor Part or Series

Calibre FL-1002 Flushbolt (E1-0331-628 Clear)
Calibre FL-1002 Flushbolt (E1-0331-335 Black)

H-4101

Standard Flushbolt Lock Assembly