

YKK aP

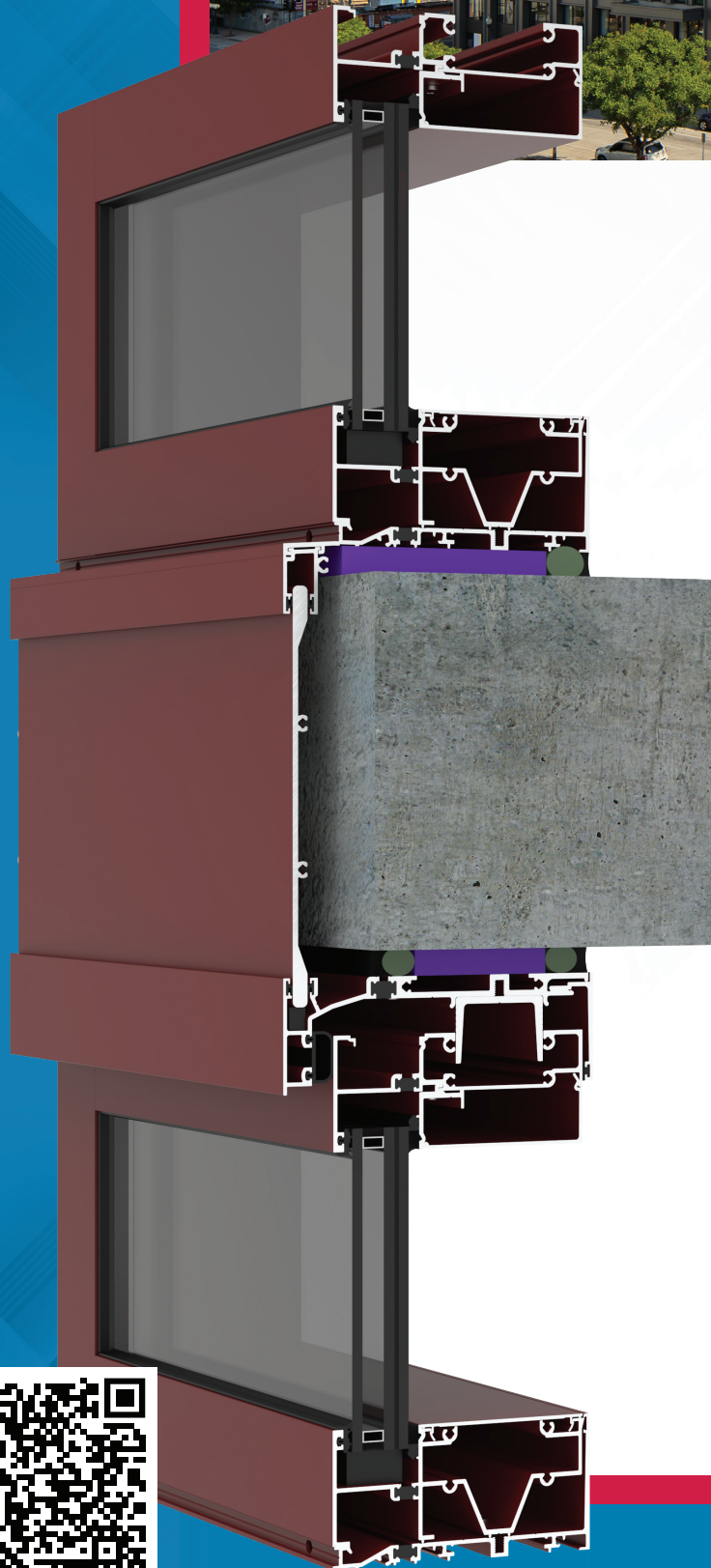
www.ykkap.com

ProTek

YKK AP Hurricane & Blast Solutions



The Standard Condos - New Orleans, LA



YHW 60 TU

Impact Rated Window Wall with Optional Slab Edge Cover

The **YHW 60 TU** is a thermally broken hurricane impact resistant system that builds on our line of versatile wall solutions for mixed use buildings. The glass plane is set to the front to maximize thermal performance and accommodates up to 1-5/16" glazing infill. Fast, efficient installation is done by using the same system for impact glazing on lower floors and non-impact glazing on upper levels.

- Design Pressures up to 90 psf
- 10' Spans with 5' Spacing
- Pre-Glazed (Unitized) option
- YKK AP ThermaBond Plus® thermal breaks
- Expansion/Heavy Duty Mullions available
- Shallow mullion option is available
- Compatible with YKK AP entrances and vents
- IBC & Florida Product Approvals: Large & Small Missile, High Velocity Hurricane Zone

Configuration:

Glazing	Glass Setting	Installation
Inside	Front Set	Screw Spine

Thermal Values:

U-Factor:	Values as low as 0.34*
CRF:	Minimum 71 frame and 64 glass

*Based on AAMA 507. Lower values may be achieved through further simulation.



YHW 60 TU SPECS		
Base Depth	6"	
Sightline	2-1/2"	
Config	Inside/Pre-Glazed & Front Set	
Tested Glass	1-5/16" Laminating IGU with Low-E (C.O.G. U-Factor: 0.29)	
Test	Results	Standards
Air Infiltration	0.06 CFM/FT ² (1.10 m ³ /h·m ²) @ 6.24 PSF (299 Pa)	ASTM E 283
Water Infiltration	Static: 15 PSF (718 Pa) Dynamic: 15 PSF (718 Pa)	ASTM E 331 AAMA 501
Acoustical (1-1/4" IGU)	Laminated STC: 39 Laminated OITC: 33	ASTM E 90 ASTM E 1425

Thermal Performance								
Mullion Depth	U-Factor - BTU/hr·ft ² ·°F						CRF	
2-1/2" x 6" (1-5/16" Laminated IGU)	0.42	0.41	0.39	0.37	0.36	0.34	71	64
Center of Glass	0.30	0.28	0.26	0.24	0.22	0.20	Frame	Glass
AAMA 507							AAMA 1503	

Finish Options	
Type	Standard
Factory Anodized	AAMA 612
Organic Paints	AAMA 2605

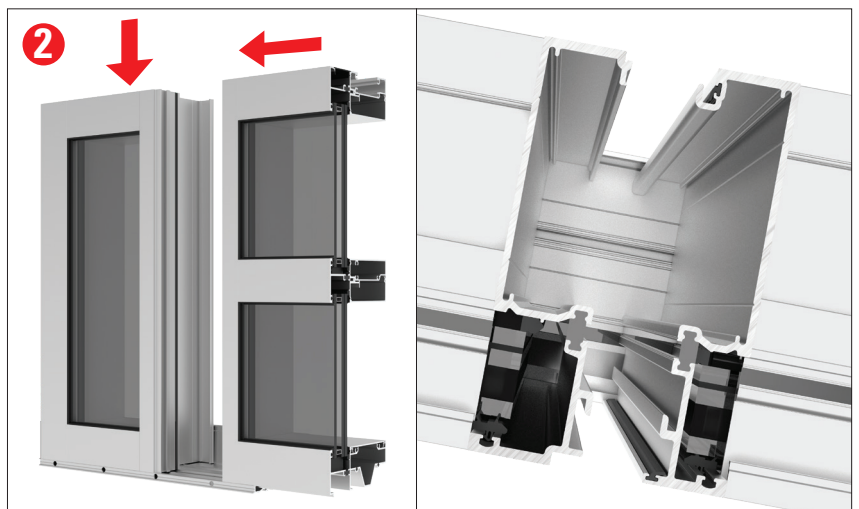
Product Approvals	
Large/Small Missile	Wind Zone 3
Hurricane HVHZ	International ICC
Florida FBC	Texas TDI

Installation Efficiency

- Anchoring options for varying wall conditions
- Impact and non-impact glazing utilize the same system
- Small Missile and Non-Impact are dry glazed
- Optional strap anchors for varying wall construction

Pre-Glazed (Unitized) Option

YKK AP developed a unitized option for this system to help glazers reduce time and labor out at the job site. By utilizing pre-glazing, ❶ the critical seals are silicined at the shop in a climate controlled site, ensuring it will cure properly before taking into the field. Then, as the units are brought out to the job site, they can be placed in easily ❷ and less sealant is needed on the site, making for a faster "dry-in" of the building. It can also be combined with traditional inside glazing in certain hard-to-reach areas for an overall easier glazing experience.



High Performance Sill Flashing

- ▶ 2" back leg on sill flashing – enhanced water resistance in the field and in water testing
- ▶ Four point attachment of end dam, with a foldable tab and three screws into flashing splines
- No secondary penetration of sill and flashing when properly sealed



Additional information including CAD details, CSI specs, test reports and installation instructions are found on the Product Guide by clicking this link or visiting www.ykkap.com/commercial/productguide