



**YKK
ap**

JAMES CLARK

A. JAMES CLARK HALL
Fischell Department of Bioengineering
Robert E. Fischell Institute for Biomedical Devices

SUN CONTROL SYSTEMS

Our energy-efficient exterior and interior sunshades help with solar heat and natural light to improve occupant comfort and reduce the glare.

ThermaShade®

Exterior Sunshade Features

- Integrates with our most popular curtain wall and storefronts
- Can be wall-mounted as an option for more design flexibility
- Contributes to LEED® with Environmental Product Declarations (EPD's)
- Over 100 different combinations of outriggers, louvres and fascia (most popular shown)
- Pre-fabricated 90-degree inside and outside corners for installation efficiency

Our installation is easy with fewer lag screws and our pre-engineered spacers. The unique hanger bolt and slotted receptor enables mounting with minimal effort. By hanging and attaching in the front, this allows for easier system access and glass replacement.



Vertical Sunshade

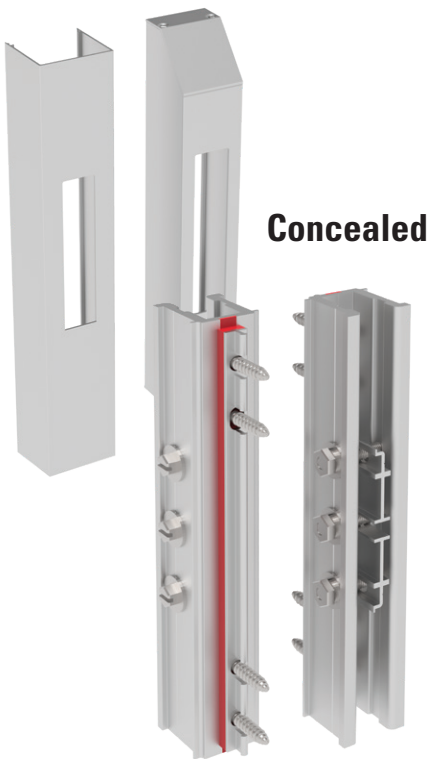
Custom vertical options are available in certain configurations. Please contact your local sales rep, branch or our engineering center for more information and any drawings to assist in your design.



Rowan College Student Center
Mt. Laurel, New Jersey

Anchoring

We have exposed and concealed anchoring options. and both are thermally broken for better performance. The concealed anchor is a cleaner design, while our exposed anchor has an industrial, complex aesthetic.



| Part # | Description |
|---------|--|
| E1-3872 | Anchor Clip (Storefront) |
| E1-3870 | Mitered Face Cover (Storefront) |
| E1-3871 | Mitered End Cap |
| E1-3873 | Anchor Clip (@ Head/Right Jamb YES Storefront) |
| E1-3874 | Anchor Clip (@ Head/Left Jamb YES Storefront) |
| E1-3875 | Anchor Clip (@ Head/Right Jamb YHS Storefront) |
| E1-3876 | Anchor Clip (@ Head/Left Jamb YHS Storefront) |
| E1-3878 | Mitered Face Cover (@ Head Storefront) |
| E1-3871 | Mitered End Cap |
| E1-3801 | Anchor Clip (YCW 750 Curtain Wall) |
| E1-3833 | Mitered Face Cover (YCW 750 OG Curtain Wall) |
| E1-3863 | Mitered Face Cover (YCW 750 XT Curtain Wall) |
| E1-3871 | Mitered End Cap |
| E1-3877 | Flush Face Cover |
| E1-3828 | Anchor Clip (YHC 300 Curtain Wall) |
| E1-3839 | Mitered Face Cover (YHC 300 Curtain Wall) |
| E1-3871 | Mitered End Cap |
| E1-3830 | Wall Mount Anchor Clip |
| E1-3831 | Wall Mount Face Cover |
| E1-3832 | Wall Mount End Cap |

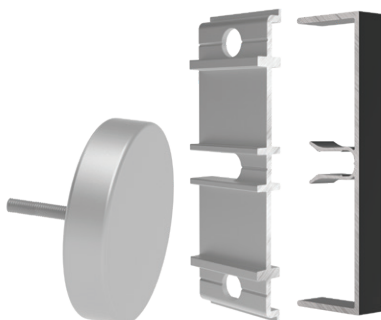


Exposed

| Part # | Description |
|---------|---------------------------------------|
| E1-3930 | Exposed Anchor (Storefront) |
| E1-3936 | Exposed Anchor (@ Head Storefront) |
| E1-3931 | Exposed Anchor (YCW 750 Curtain Wall) |
| E1-3933 | Exposed Anchor (YHC 300 Curtain Wall) |

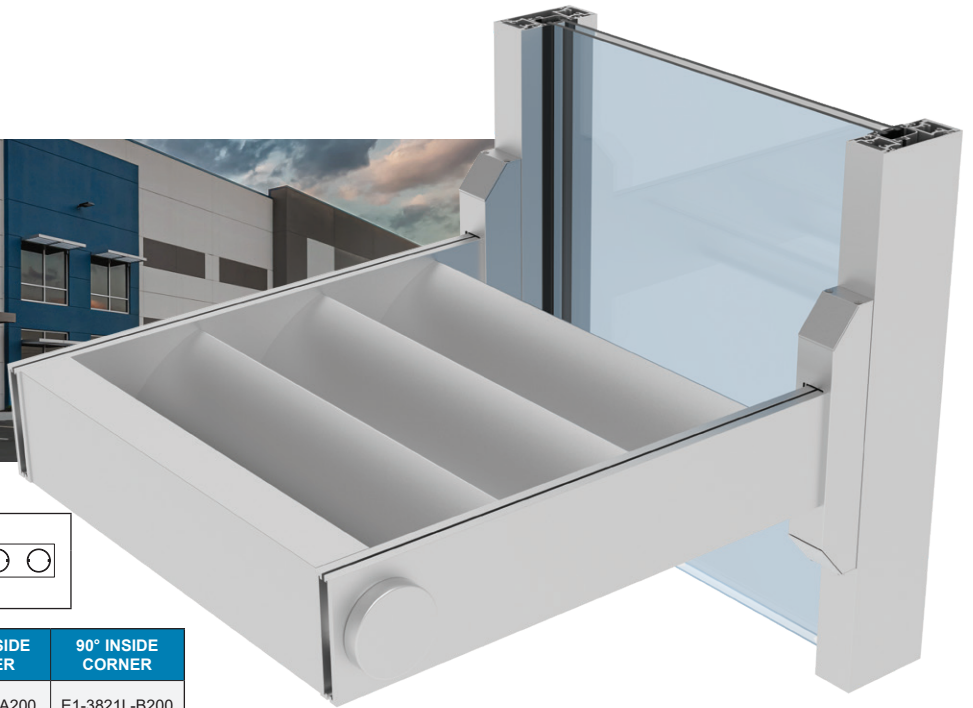
General Accessories

| Part # | Description |
|---------|--|
| E1-3803 | Outrigger Installation Attachment |
| E1-3934 | Outrigger Gap Spacer (Intermediate) |
| E1-3935 | Outrigger Gap Spacer (Jamb) |
| E1-3839 | Outrigger Plate |
| E1-3804 | Outrigger Connector |
| E9-8596 | Heavy-Duty Sunshade Bracket |
| E9-8595 | Sunshade Adaptor |
| E1-3807 | Medallion End Piece (3-1/2" Diameter) |
| E1-3808 | Medallion Spacer Piece (3-1/2" Diameter) |
| E1-3809 | Medallion End Piece (1" Diameter) |
| E1-3810 | Medallion Spacer Piece (1" Diameter) |
| E1-3549 | Aluminum Spacer (1/2" Diameter) |
| E9-3727 | Mullion Reinforcement Sleeve |



**FBI Regional Field Office
San Juan, Puerto Rico**

Square Outriggers



| LOUVER | FASCIA | |
|----------------------------|----------------------------|--|
| Circular 3-1/2" E9-3705 | Circular 3-1/2" E9-3705 | |

| LENGTH | HAND | INTERMEDIATE | END BAY | 90° OUTSIDE CORNER | 90° INSIDE CORNER |
|--------|-------|---------------|---------------|--------------------|-------------------|
| 24" | Left | E1-3821L-0200 | E1-3820L-0200 | E1-3821L-A200 | E1-3821L-B200 |
| | Right | E1-3821R-0200 | E1-3820R-0200 | E1-3821R-A200 | E1-3821R-B200 |
| 30" | Left | E1-3821L-0206 | E1-3820L-0206 | E1-3821L-A206 | E1-3821L-B206 |
| | Right | E1-3821R-0206 | E1-3820R-0206 | E1-3821R-A206 | E1-3821R-B206 |
| 36" | Left | E1-3821L-0300 | E1-3820L-0300 | E1-3821L-A300 | E1-3821L-B300 |
| | Right | E1-3821R-0300 | E1-3820R-0300 | E1-3821R-A300 | E1-3821R-B300 |

| LOUVER | FASCIA | |
|----------------------------|-------------------|--|
| Circular 3-1/2" E9-3705 | Square E9-3714 | |

| LENGTH | HAND | INTERMEDIATE | END BAY | 90° OUTSIDE CORNER | 90° INSIDE CORNER |
|--------|-------|---------------|---------------|--------------------|-------------------|
| 24" | Left | E1-3821L-0200 | E1-3820L-0200 | E1-3821L-A200 | E1-3821L-B200 |
| | Right | E1-3821R-0200 | E1-3820R-0200 | E1-3821R-A200 | E1-3821R-B200 |
| 30" | Left | E1-3821L-0206 | E1-3820L-0206 | E1-3821L-A206 | E1-3821L-B206 |
| | Right | E1-3821R-0206 | E1-3820R-0206 | E1-3821R-A206 | E1-3821R-B206 |
| 36" | Left | E1-3821L-0300 | E1-3820L-0300 | E1-3821L-A300 | E1-3821L-B300 |
| | Right | E1-3821R-0300 | E1-3820R-0300 | E1-3821R-A300 | E1-3821R-B300 |

| LOUVER | FASCIA | |
|-------------------|----------------------------|--|
| Square E9-3714 | Circular 3-1/2" E9-3705 | |

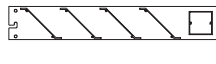
| LENGTH | HAND | INTERMEDIATE | END BAY | 90° OUTSIDE CORNER | 90° INSIDE CORNER |
|--------|-------|---------------|---------------|--------------------|-------------------|
| 24" | Left | E1-3821L-0200 | E1-3820L-0200 | E1-3821L-A200 | E1-3821L-B200 |
| | Right | E1-3821R-0200 | E1-3820R-0200 | E1-3821R-A200 | E1-3821R-B200 |
| 30" | Left | E1-3821L-0206 | E1-3820L-0206 | E1-3821L-A206 | E1-3821L-B206 |
| | Right | E1-3821R-0206 | E1-3820R-0206 | E1-3821R-A206 | E1-3821R-B206 |
| 36" | Left | E1-3821L-0300 | E1-3820L-0300 | E1-3821L-A300 | E1-3821L-B300 |
| | Right | E1-3821R-0300 | E1-3820R-0300 | E1-3821R-A300 | E1-3821R-B300 |

| LOUVER | FASCIA | |
|-------------------|-------------------|--|
| Square E9-3714 | Square E9-3714 | |

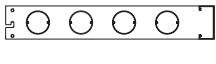
| LENGTH | HAND | INTERMEDIATE | END BAY | 90° OUTSIDE CORNER | 90° INSIDE CORNER |
|--------|-------|---------------|---------------|--------------------|-------------------|
| 24" | Left | E1-3821L-0200 | E1-3820L-0200 | E1-3821L-A200 | E1-3821L-B200 |
| | Right | E1-3821R-0200 | E1-3820R-0200 | E1-3821R-A200 | E1-3821R-B200 |
| 30" | Left | E1-3821L-0206 | E1-3820L-0206 | E1-3821L-A206 | E1-3821L-B206 |
| | Right | E1-3821R-0206 | E1-3820R-0206 | E1-3821R-A206 | E1-3821R-B206 |
| 36" | Left | E1-3821L-0300 | E1-3820L-0300 | E1-3821L-A300 | E1-3821L-B300 |
| | Right | E1-3821R-0300 | E1-3820R-0300 | E1-3821R-A300 | E1-3821R-B300 |

| LOUVER | FASCIA | |
|------------------------|----------------------------|--|
| Circular 3" E9-3706 | Circular 3-1/2" E9-3705 | |

| LENGTH | HAND | INTERMEDIATE | END BAY | 90° OUTSIDE CORNER | 90° INSIDE CORNER |
|--------|-------|---------------|---------------|--------------------|-------------------|
| 24" | Left | E1-3822L-0200 | E1-3820L-0200 | E1-3822L-A200 | E1-3822L-B200 |
| | Right | E1-3822R-0200 | E1-3820R-0200 | E1-3822R-A200 | E1-3822R-B200 |
| 30" | Left | E1-3822L-0206 | E1-3820L-0206 | E1-3822L-A206 | E1-3822L-B206 |
| | Right | E1-3822R-0206 | E1-3820R-0206 | E1-3822R-A206 | E1-3822R-B206 |
| 36" | Left | E1-3822L-0300 | E1-3820L-0300 | E1-3822L-A300 | E1-3822L-B300 |
| | Right | E1-3822R-0300 | E1-3820R-0300 | E1-3822R-A300 | E1-3822R-B300 |

| LOUVER | FASCIA | |
|------------------|----------------------------|---|
| Angle E9-3710 | Circular 3-1/2" E9-3705 |  |

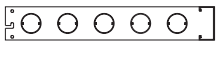
| LENGTH | HAND | INTERMEDIATE | END BAY | 90° OUTSIDE CORNER | 90° INSIDE CORNER |
|--------|-------|---------------|---------------|--------------------|-------------------|
| 24" | Left | E1-3823L-0200 | E1-3820L-0200 | E1-3823L-A200 | E1-3823L-B200 |
| | Right | E1-3823R-0200 | E1-3820R-0200 | E1-3823R-A200 | E1-3823R-B200 |
| 30" | Left | E1-3823L-0206 | E1-3820L-0206 | E1-3823L-A206 | E1-3823L-B206 |
| | Right | E1-3823R-0206 | E1-3820R-0206 | E1-3823R-A206 | E1-3823R-B206 |
| 36" | Left | E1-3823L-0300 | E1-3820L-0300 | E1-3823L-A300 | E1-3823L-B300 |
| | Right | E1-3823R-0300 | E1-3820R-0300 | E1-3823R-A300 | E1-3823R-B300 |

| LOUVER | FASCIA | |
|----------------------------|------------------------|---|
| Circular 3-1/2" E9-3705 | Rectangular E9-3715 |  |

| LENGTH | HAND | INTERMEDIATE | END BAY | 90° OUTSIDE CORNER | 90° INSIDE CORNER |
|--------|-------|---------------|---------------|--------------------|-------------------|
| 24" | Left | E1-3824L-0200 | E1-3820L-0200 | E1-3824L-A200 | E1-3824L-B200 |
| | Right | E1-3824R-0200 | E1-3820R-0200 | E1-3824R-A200 | E1-3824R-B200 |
| 30" | Left | E1-3824L-0206 | E1-3820L-0206 | E1-3824L-A206 | E1-3824L-B206 |
| | Right | E1-3824R-0206 | E1-3820R-0206 | E1-3824R-A206 | E1-3824R-B206 |
| 36" | Left | E1-3824L-0300 | E1-3820L-0300 | E1-3824L-A300 | E1-3824L-B300 |
| | Right | E1-3824R-0300 | E1-3820R-0300 | E1-3824R-A300 | E1-3824R-B300 |

| LOUVER | FASCIA | |
|-------------------|------------------------|---|
| Square E9-3714 | Rectangular E9-3715 |  |

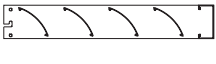
| LENGTH | HAND | INTERMEDIATE | END BAY | 90° OUTSIDE CORNER | 90° INSIDE CORNER |
|--------|-------|---------------|---------------|--------------------|-------------------|
| 24" | Left | E1-3824L-0200 | E1-3820L-0200 | E1-3824L-A200 | E1-3824L-B200 |
| | Right | E1-3824R-0200 | E1-3820R-0200 | E1-3824R-A200 | E1-3824R-B200 |
| 30" | Left | E1-3824L-0206 | E1-3820L-0206 | E1-3824L-A206 | E1-3824L-B206 |
| | Right | E1-3824R-0206 | E1-3820R-0206 | E1-3824R-A206 | E1-3824R-B206 |
| 36" | Left | E1-3824L-0300 | E1-3820L-0300 | E1-3824L-A300 | E1-3824L-B300 |
| | Right | E1-3824R-0300 | E1-3820R-0300 | E1-3824R-A300 | E1-3824R-B300 |

| LOUVER | FASCIA | |
|------------------------|------------------------|---|
| Circular 3" E9-3706 | Rectangular E9-3715 |  |


| LENGTH | HAND | INTERMEDIATE | END BAY | 90° OUTSIDE CORNER | 90° INSIDE CORNER |
|--------|-------|---------------|---------------|--------------------|-------------------|
| 24" | Left | E1-3825L-0200 | E1-3820L-0200 | E1-3825L-A200 | E1-3825L-B200 |
| | Right | E1-3825R-0200 | E1-3820R-0200 | E1-3825R-A200 | E1-3825R-B200 |
| 30" | Left | E1-3825L-0206 | E1-3820L-0206 | E1-3825L-A206 | E1-3825L-B206 |
| | Right | E1-3825R-0206 | E1-3820R-0206 | E1-3825R-A206 | E1-3825R-B206 |
| 36" | Left | E1-3825L-0300 | E1-3820L-0300 | E1-3825L-A300 | E1-3825L-B300 |
| | Right | E1-3825R-0300 | E1-3820R-0300 | E1-3825R-A300 | E1-3825R-B300 |

| LOUVER | FASCIA | |
|----------------------|------------------------|---|
| Winged 3" E9-3707 | Rectangular E9-3715 |  |

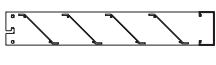
| LENGTH | HAND | INTERMEDIATE | END BAY | 90° OUTSIDE CORNER | 90° INSIDE CORNER |
|--------|-------|---------------|---------------|--------------------|-------------------|
| 24" | Left | E1-3825L-0200 | E1-3820L-0200 | E1-3825L-A200 | E1-3825L-B200 |
| | Right | E1-3825R-0200 | E1-3820R-0200 | E1-3825R-A200 | E1-3825R-B200 |
| 30" | Left | E1-3825L-0206 | E1-3820L-0206 | E1-3825L-A206 | E1-3825L-B206 |
| | Right | E1-3825R-0206 | E1-3820R-0206 | E1-3825R-A206 | E1-3825R-B206 |
| 36" | Left | E1-3825L-0300 | E1-3820L-0300 | E1-3825L-A300 | E1-3825L-B300 |
| | Right | E1-3825R-0300 | E1-3820R-0300 | E1-3825R-A300 | E1-3825R-B300 |

| LOUVER | FASCIA | |
|-------------------------|------------------------|---|
| Open Airfoil E9-3708 | Rectangular E9-3715 |  |

| LENGTH | HAND | INTERMEDIATE | END BAY | 90° OUTSIDE CORNER | 90° INSIDE CORNER |
|--------|-------|---------------|---------------|--------------------|-------------------|
| 24" | Left | E1-3826L-0200 | E1-3820L-0200 | E1-3826L-A200 | E1-3826L-B200 |
| | Right | E1-3826R-0200 | E1-3820R-0200 | E1-3826R-A200 | E1-3826R-B200 |
| 30" | Left | E1-3826L-0206 | E1-3820L-0206 | E1-3826L-A206 | E1-3826L-B206 |
| | Right | E1-3826R-0206 | E1-3820R-0206 | E1-3826R-A206 | E1-3826R-B206 |
| 36" | Left | E1-3826L-0300 | E1-3820L-0300 | E1-3826L-A300 | E1-3826L-B300 |
| | Right | E1-3826R-0300 | E1-3820R-0300 | E1-3826R-A300 | E1-3826R-B300 |

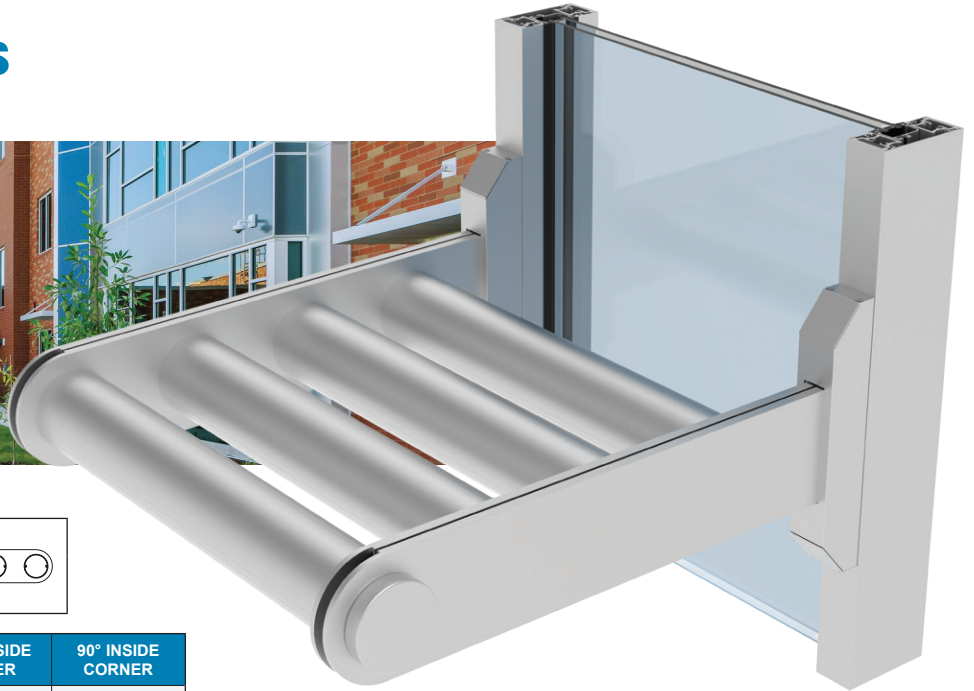
| LOUVER | FASCIA | |
|-----------------------|------------------------|---|
| Airfoil 6" E9-3709 | Rectangular E9-3715 |  |

| LENGTH | HAND | INTERMEDIATE | END BAY | 90° OUTSIDE CORNER | 90° INSIDE CORNER |
|--------|-------|---------------|---------------|--------------------|-------------------|
| 24" | Left | E1-3826L-0200 | E1-3820L-0200 | E1-3826L-A200 | E1-3826L-B200 |
| | Right | E1-3826R-0200 | E1-3820R-0200 | E1-3826R-A200 | E1-3826R-B200 |
| 30" | Left | E1-3826L-0206 | E1-3820L-0206 | E1-3826L-A206 | E1-3826L-B206 |
| | Right | E1-3826R-0206 | E1-3820R-0206 | E1-3826R-A206 | E1-3826R-B206 |
| 36" | Left | E1-3826L-0300 | E1-3820L-0300 | E1-3826L-A300 | E1-3826L-B300 |
| | Right | E1-3826R-0300 | E1-3820R-0300 | E1-3826R-A300 | E1-3826R-B300 |

| LOUVER | FASCIA | |
|------------------|------------------------|---|
| Angle E9-3710 | Rectangular E9-3715 |  |

| LENGTH | HAND | INTERMEDIATE | END BAY | 90° OUTSIDE CORNER | 90° INSIDE CORNER |
|--------|-------|---------------|---------------|--------------------|-------------------|
| 24" | Left | E1-3826L-0200 | E1-3820L-0200 | E1-3826L-A200 | E1-3826L-B200 |
| | Right | E1-3826R-0200 | E1-3820R-0200 | E1-3826R-A200 | E1-3826R-B200 |
| 30" | Left | E1-3826L-0206 | E1-3820L-0206 | E1-3826L-A206 | E1-3826L-B206 |
| | Right | E1-3826R-0206 | E1-3820R-0206 | E1-3826R-A206 | E1-3826R-B206 |
| 36" | Left | E1-3826L-0300 | E1-3820L-0300 | E1-3826L-A300 | E1-3826L-B300 |
| | Right | E1-3826R-0300 | E1-3820R-0300 | E1-3826R-A300 | E1-3826R-B300 |

Rounded Outriggers



| LOUVER | FASCIA | |
|----------------------------|----------------------------|--|
| Circular 3-1/2" E9-3705 | Circular 3-1/2" E9-3705 | |

| LENGTH | HAND | INTERMEDIATE | END BAY | 90° OUTSIDE CORNER | 90° INSIDE CORNER |
|--------|-------|---------------|---------------|--------------------|-------------------|
| 24" | Left | E1-3841L-0200 | E1-3840L-0200 | E1-3841L-A200 | E1-3841L-B200 |
| | Right | E1-3841R-0200 | E1-3840R-0200 | E1-3841R-A200 | E1-3841R-B200 |
| 30" | Left | E1-3841L-0206 | E1-3840L-0206 | E1-3841L-A206 | E1-3841L-B206 |
| | Right | E1-3841R-0206 | E1-3840R-0206 | E1-3841R-A206 | E1-3841R-B206 |
| 36" | Left | E1-3841L-0300 | E1-3840L-0300 | E1-3841L-A300 | E1-3841L-B300 |
| | Right | E1-3841R-0300 | E1-3840R-0300 | E1-3841R-A300 | E1-3841R-B300 |

| LOUVER | FASCIA | |
|-------------------|----------------------------|--|
| Square E9-3714 | Circular 3-1/2" E9-3705 | |

| LENGTH | HAND | INTERMEDIATE | END BAY | 90° OUTSIDE CORNER | 90° INSIDE CORNER |
|--------|-------|---------------|---------------|--------------------|-------------------|
| 24" | Left | E1-3841L-0200 | E1-3840L-0200 | E1-3841L-A200 | E1-3841L-B200 |
| | Right | E1-3841R-0200 | E1-3840R-0200 | E1-3841R-A200 | E1-3841R-B200 |
| 30" | Left | E1-3841L-0206 | E1-3840L-0206 | E1-3841L-A206 | E1-3841L-B206 |
| | Right | E1-3841R-0206 | E1-3840R-0206 | E1-3841R-A206 | E1-3841R-B206 |
| 36" | Left | E1-3841L-0300 | E1-3840L-0300 | E1-3841L-A300 | E1-3841L-B300 |
| | Right | E1-3841R-0300 | E1-3840R-0300 | E1-3841R-A300 | E1-3841R-B300 |

| LOUVER | FASCIA | |
|------------------------|----------------------------|--|
| Circular 3" E9-3706 | Circular 3-1/2" E9-3705 | |

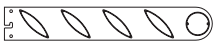
| LENGTH | HAND | INTERMEDIATE | END BAY | 90° OUTSIDE CORNER | 90° INSIDE CORNER |
|--------|-------|---------------|---------------|--------------------|-------------------|
| 24" | Left | E1-3842L-0200 | E1-3840L-0200 | E1-3842L-A200 | E1-3842L-B200 |
| | Right | E1-3842R-0200 | E1-3840R-0200 | E1-3842R-A200 | E1-3842R-B200 |
| 30" | Left | E1-3842L-0206 | E1-3840L-0206 | E1-3842L-A206 | E1-3842L-B206 |
| | Right | E1-3842R-0206 | E1-3840R-0206 | E1-3842R-A206 | E1-3842R-B206 |
| 36" | Left | E1-3842L-0300 | E1-3840L-0300 | E1-3842L-A300 | E1-3842L-B300 |
| | Right | E1-3842R-0300 | E1-3840R-0300 | E1-3842R-A300 | E1-3842R-B300 |

| LOUVER | FASCIA | |
|----------------------|----------------------------|--|
| Winged 3" E9-3707 | Circular 3-1/2" E9-3705 | |

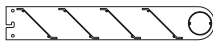
| LENGTH | HAND | INTERMEDIATE | END BAY | 90° OUTSIDE CORNER | 90° INSIDE CORNER |
|--------|-------|---------------|---------------|--------------------|-------------------|
| 24" | Left | E1-3842L-0200 | E1-3840L-0200 | E1-3842L-A200 | E1-3842L-B200 |
| | Right | E1-3842R-0200 | E1-3840R-0200 | E1-3842R-A200 | E1-3842R-B200 |
| 30" | Left | E1-3842L-0206 | E1-3840L-0206 | E1-3842L-A206 | E1-3842L-B206 |
| | Right | E1-3842R-0206 | E1-3840R-0206 | E1-3842R-A206 | E1-3842R-B206 |
| 36" | Left | E1-3842L-0300 | E1-3840L-0300 | E1-3842L-A300 | E1-3842L-B300 |
| | Right | E1-3842R-0300 | E1-3840R-0300 | E1-3842R-A300 | E1-3842R-B300 |

| LOUVER | FASCIA | |
|-------------------------|----------------------------|--|
| Open Airfoil E9-3708 | Circular 3-1/2" E9-3705 | |

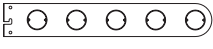
| LENGTH | HAND | INTERMEDIATE | END BAY | 90° OUTSIDE CORNER | 90° INSIDE CORNER |
|--------|-------|---------------|---------------|--------------------|-------------------|
| 24" | Left | E1-3843L-0200 | E1-3840L-0200 | E1-3843L-A200 | E1-3843L-B200 |
| | Right | E1-3843R-0200 | E1-3840R-0200 | E1-3843R-A200 | E1-3843R-B200 |
| 30" | Left | E1-3843L-0206 | E1-3840L-0206 | E1-3843L-A206 | E1-3843L-B206 |
| | Right | E1-3843R-0206 | E1-3840R-0206 | E1-3843R-A206 | E1-3843R-B206 |
| 36" | Left | E1-3843L-0300 | E1-3840L-0300 | E1-3843L-A300 | E1-3843L-B300 |
| | Right | E1-3843R-0300 | E1-3840R-0300 | E1-3843R-A300 | E1-3843R-B300 |

| LOUVER | FASCIA | |
|-----------------------|----------------------------|--|
| Airfoil 6" E9-3709 | Circular 3-1/2" E9-3705 |  |

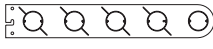
| LENGTH | HAND | INTERMEDIATE | END BAY | 90° OUTSIDE CORNER | 90° INSIDE CORNER |
|--------|-------|---------------|---------------|--------------------|-------------------|
| 24" | Left | E1-3843L-0200 | E1-3840L-0200 | E1-3843L-A200 | E1-3843L-B200 |
| | Right | E1-3843R-0200 | E1-3840R-0200 | E1-3843R-A200 | E1-3843R-B200 |
| 30" | Left | E1-3843L-0206 | E1-3840L-0206 | E1-3843L-A206 | E1-3843L-B206 |
| | Right | E1-3843R-0206 | E1-3840R-0206 | E1-3843R-A206 | E1-3843R-B206 |
| 36" | Left | E1-3843L-0300 | E1-3840L-0300 | E1-3843L-A300 | E1-3843L-B300 |
| | Right | E1-3843R-0300 | E1-3840R-0300 | E1-3843R-A300 | E1-3843R-B300 |

| LOUVER | FASCIA | |
|------------------|----------------------------|--|
| Angle E9-3710 | Circular 3-1/2" E9-3705 |  |

| LENGTH | HAND | INTERMEDIATE | END BAY | 90° OUTSIDE CORNER | 90° INSIDE CORNER |
|--------|-------|---------------|---------------|--------------------|-------------------|
| 24" | Left | E1-3843L-0200 | E1-3840L-0200 | E1-3843L-A200 | E1-3843L-B200 |
| | Right | E1-3843R-0200 | E1-3840R-0200 | E1-3843R-A200 | E1-3843R-B200 |
| 30" | Left | E1-3843L-0206 | E1-3840L-0206 | E1-3843L-A206 | E1-3843L-B206 |
| | Right | E1-3843R-0206 | E1-3840R-0206 | E1-3843R-A206 | E1-3843R-B206 |
| 36" | Left | E1-3843L-0300 | E1-3840L-0300 | E1-3843L-A300 | E1-3843L-B300 |
| | Right | E1-3843R-0300 | E1-3840R-0300 | E1-3843R-A300 | E1-3843R-B300 |

| LOUVER | FASCIA | |
|------------------------|------------------------|---|
| Circular 3" E9-3706 | Circular 3" E9-3706 |  |

| LENGTH | HAND | INTERMEDIATE | END BAY | 90° OUTSIDE CORNER | 90° INSIDE CORNER |
|--------|-------|---------------|---------------|--------------------|-------------------|
| 24" | Left | E1-3844L-0200 | E1-3840L-0200 | E1-3844L-A200 | E1-3844L-B200 |
| | Right | E1-3844R-0200 | E1-3840R-0200 | E1-3844R-A200 | E1-3844R-B200 |
| 30" | Left | E1-3844L-0206 | E1-3840L-0206 | E1-3844L-A206 | E1-3844L-B206 |
| | Right | E1-3844R-0206 | E1-3840R-0206 | E1-3844R-A206 | E1-3844R-B206 |
| 36" | Left | E1-3844L-0300 | E1-3840L-0300 | E1-3844L-A300 | E1-3844L-B300 |
| | Right | E1-3844R-0300 | E1-3840R-0300 | E1-3844R-A300 | E1-3844R-B300 |

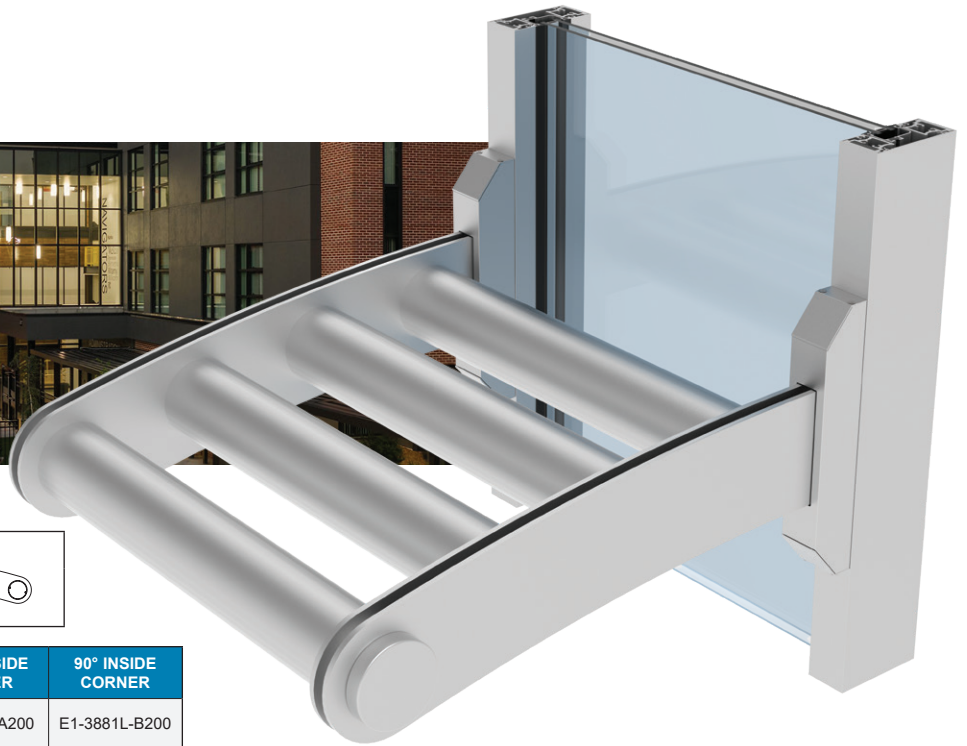
| LOUVER | FASCIA | |
|----------------------|------------------------|---|
| Winged 3" E9-3707 | Circular 3" E9-3706 |  |

| LENGTH | HAND | INTERMEDIATE | END BAY | 90° OUTSIDE CORNER | 90° INSIDE CORNER |
|--------|-------|---------------|---------------|--------------------|-------------------|
| 24" | Left | E1-3844L-0200 | E1-3840L-0200 | E1-3844L-A200 | E1-3844L-B200 |
| | Right | E1-3844R-0200 | E1-3840R-0200 | E1-3844R-A200 | E1-3844R-B200 |
| 30" | Left | E1-3844L-0206 | E1-3840L-0206 | E1-3844L-A206 | E1-3844L-B206 |
| | Right | E1-3844R-0206 | E1-3840R-0206 | E1-3844R-A206 | E1-3844R-B206 |
| 36" | Left | E1-3844L-0300 | E1-3840L-0300 | E1-3844L-A300 | E1-3844L-B300 |
| | Right | E1-3844R-0300 | E1-3840R-0300 | E1-3844R-A300 | E1-3844R-B300 |

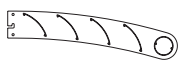
Health Pointe Medical
Grand Haven, MI



Curved Outriggers



| LOUVER | FASCIA |
|-------------------------|----------------------------|
| Open Airfoil E9-3708 | Circular 3-1/2" E9-3705 |



| LENGTH | HAND | INTERMEDIATE | END BAY | 90° OUTSIDE CORNER | 90° INSIDE CORNER |
|--------|-------|---------------|---------------|--------------------|-------------------|
| 24" | Left | E1-3881L-0200 | E1-3880L-0200 | E1-3881L-A200 | E1-3881L-B200 |
| | Right | E1-3881R-0200 | E1-3880R-0200 | E1-3881R-A200 | E1-3881R-B200 |
| 30" | Left | E1-3881L-0206 | E1-3880L-0206 | E1-3881L-A206 | E1-3881L-B206 |
| | Right | E1-3881R-0206 | E1-3880R-0206 | E1-3881R-A206 | E1-3881R-B206 |
| 36" | Left | E1-3881L-0300 | E1-3880L-0300 | E1-3881L-A300 | E1-3881L-B300 |
| | Right | E1-3881R-0300 | E1-3880R-0300 | E1-3881R-A300 | E1-3881R-B300 |

| LOUVER | FASCIA |
|-----------------------|----------------------------|
| Airfoil 6" E9-3709 | Circular 3-1/2" E9-3705 |



| LENGTH | HAND | INTERMEDIATE | END BAY | 90° OUTSIDE CORNER | 90° INSIDE CORNER |
|--------|-------|---------------|---------------|--------------------|-------------------|
| 24" | Left | E1-3881L-0200 | E1-3880L-0200 | E1-3881L-A200 | E1-3881L-B200 |
| | Right | E1-3881R-0200 | E1-3880R-0200 | E1-3881R-A200 | E1-3881R-B200 |
| 30" | Left | E1-3881L-0206 | E1-3880L-0206 | E1-3881L-A206 | E1-3881L-B206 |
| | Right | E1-3881R-0206 | E1-3880R-0206 | E1-3881R-A206 | E1-3881R-B206 |
| 36" | Left | E1-3881L-0300 | E1-3880L-0300 | E1-3881L-A300 | E1-3881L-B300 |
| | Right | E1-3881R-0300 | E1-3880R-0300 | E1-3881R-A300 | E1-3881R-B300 |

| LOUVER | FASCIA |
|----------------------------|----------------------------|
| Circular 3-1/2" E9-3705 | Circular 3-1/2" E9-3705 |



| LENGTH | HAND | INTERMEDIATE | END BAY | 90° OUTSIDE CORNER | 90° INSIDE CORNER |
|--------|-------|---------------|---------------|--------------------|-------------------|
| 24" | Left | E1-3882L-0200 | E1-3880L-0200 | E1-3882L-A200 | E1-3882L-B200 |
| | Right | E1-3882R-0200 | E1-3880R-0200 | E1-3882R-A200 | E1-3882R-B200 |
| 30" | Left | E1-3882L-0206 | E1-3880L-0206 | E1-3882L-A206 | E1-3882L-B206 |
| | Right | E1-3882R-0206 | E1-3880R-0206 | E1-3882R-A206 | E1-3882R-B206 |
| 36" | Left | E1-3882L-0300 | E1-3880L-0300 | E1-3882L-A300 | E1-3882L-B300 |
| | Right | E1-3882R-0300 | E1-3880R-0300 | E1-3882R-A300 | E1-3882R-B300 |

| LOUVER | FASCIA |
|------------------------|------------------------|
| Circular 3" E9-3706 | Circular 3" E9-3706 |



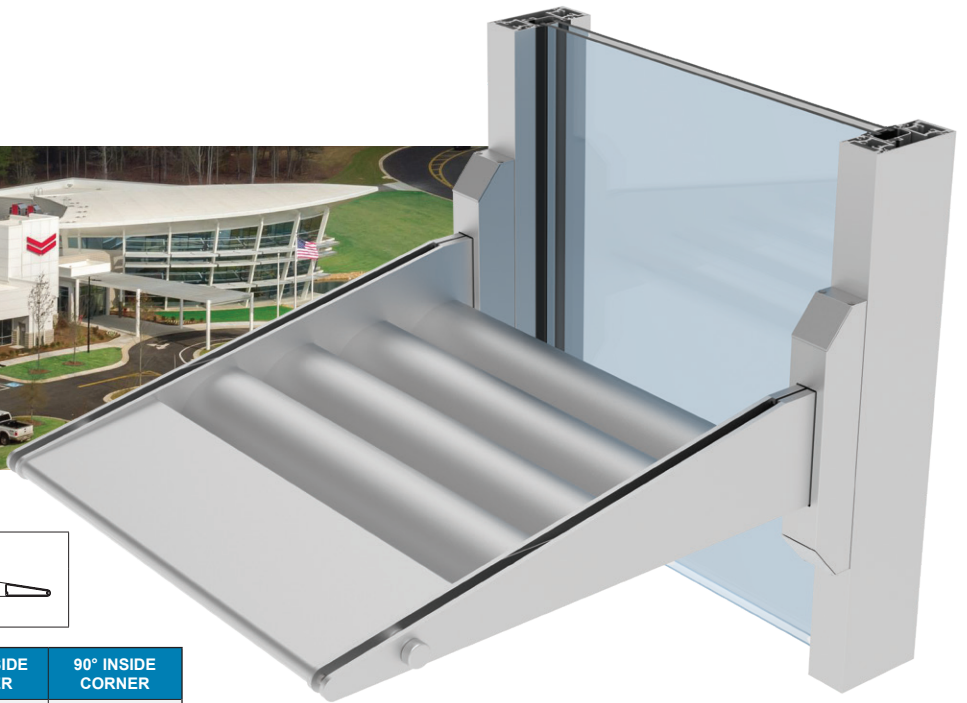
| LENGTH | HAND | INTERMEDIATE | END BAY | 90° OUTSIDE CORNER | 90° INSIDE CORNER |
|--------|-------|---------------|---------------|--------------------|-------------------|
| 24" | Left | E1-3883L-0200 | E1-3880L-0200 | E1-3883L-A200 | E1-3883L-B200 |
| | Right | E1-3883R-0200 | E1-3880R-0200 | E1-3883R-A200 | E1-3883R-B200 |
| 30" | Left | E1-3883L-0206 | E1-3880L-0206 | E1-3883L-A206 | E1-3883L-B206 |
| | Right | E1-3883R-0206 | E1-3880R-0206 | E1-3883R-A206 | E1-3883R-B206 |
| 36" | Left | E1-3883L-0300 | E1-3880L-0300 | E1-3883L-A300 | E1-3883L-B300 |
| | Right | E1-3883R-0300 | E1-3880R-0300 | E1-3883R-A300 | E1-3883R-B300 |


| LOUVER | FASCIA |
|----------------------|------------------------|
| Winged 3" E9-3707 | Circular 3" E9-3706 |




| LENGTH | HAND | INTERMEDIATE | END BAY | 90° OUTSIDE CORNER | 90° INSIDE CORNER |
|--------|-------|---------------|---------------|--------------------|-------------------|
| 24" | Left | E1-3883L-0200 | E1-3880L-0200 | E1-3883L-A200 | E1-3883L-B200 |
| | Right | E1-3883R-0200 | E1-3880R-0200 | E1-3883R-A200 | E1-3883R-B200 |
| 30" | Left | E1-3883L-0206 | E1-3880L-0206 | E1-3883L-A206 | E1-3883L-B206 |
| | Right | E1-3883R-0206 | E1-3880R-0206 | E1-3883R-A206 | E1-3883R-B206 |
| 36" | Left | E1-3883L-0300 | E1-3880L-0300 | E1-3883L-A300 | E1-3883L-B300 |
| | Right | E1-3883R-0300 | E1-3880R-0300 | E1-3883R-A300 | E1-3883R-B300 |

Wedged Outriggers



| LOUVER | FASCIA | |
|----------------------------|------------------|---|
| Circular 2-1/4" E9-3712 | Wedge E9-3711 |  |

| LENGTH | HAND | INTERMEDIATE | END BAY | 90° OUTSIDE CORNER | 90° INSIDE CORNER |
|--------|-------|---------------|---------------|--------------------|-------------------|
| 24" | Left | E1-3861L-0200 | E1-3860L-0200 | E1-3861L-A200 | E1-3861L-B200 |
| | Right | E1-3861R-0200 | E1-3860R-0200 | E1-3861R-A200 | E1-3861R-B200 |
| 30" | Left | E1-3861L-0206 | E1-3860L-0206 | E1-3861L-A206 | E1-3861L-B206 |
| | Right | E1-3861R-0206 | E1-3860R-0206 | E1-3861R-A206 | E1-3861R-B206 |
| 36" | Left | E1-3861L-0300 | E1-3860L-0300 | E1-3861L-A300 | E1-3861L-B300 |
| | Right | E1-3861R-0300 | E1-3860R-0300 | E1-3861R-A300 | E1-3861R-B300 |

| LOUVER | FASCIA | |
|---------------------------|------------------|---|
| Airfoil 3-5/8" E9-3713 | Wedge E9-3711 |  |

| LENGTH | HAND | INTERMEDIATE | END BAY | 90° OUTSIDE CORNER | 90° INSIDE CORNER |
|--------|-------|---------------|---------------|--------------------|-------------------|
| 24" | Left | E1-3862L-0200 | E1-3860L-0200 | E1-3862L-A200 | E1-3862L-B200 |
| | Right | E1-3862R-0200 | E1-3860R-0200 | E1-3862R-A200 | E1-3862R-B200 |
| 30" | Left | E1-3862L-0206 | E1-3860L-0206 | E1-3862L-A206 | E1-3862L-B206 |
| | Right | E1-3862R-0206 | E1-3860R-0206 | E1-3862R-A206 | E1-3862R-B206 |
| 36" | Left | E1-3862L-0300 | E1-3860L-0300 | E1-3862L-A300 | E1-3862L-B300 |
| | Right | E1-3862R-0300 | E1-3860R-0300 | E1-3862R-A300 | E1-3862R-B300 |

Interior Sunshade Features

- Modular components simplify fabrication, installation and replacement
- Can be applied to all wall systems that have a minimum 2" interior face dimension
- All fabrication and most assembly can be completed in the shop, reducing overall cost
- The pivoting panel feature makes each modular panel component very easy to clean

E9-3775
Square



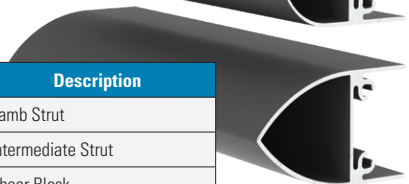
E9-3777
Quarter Round



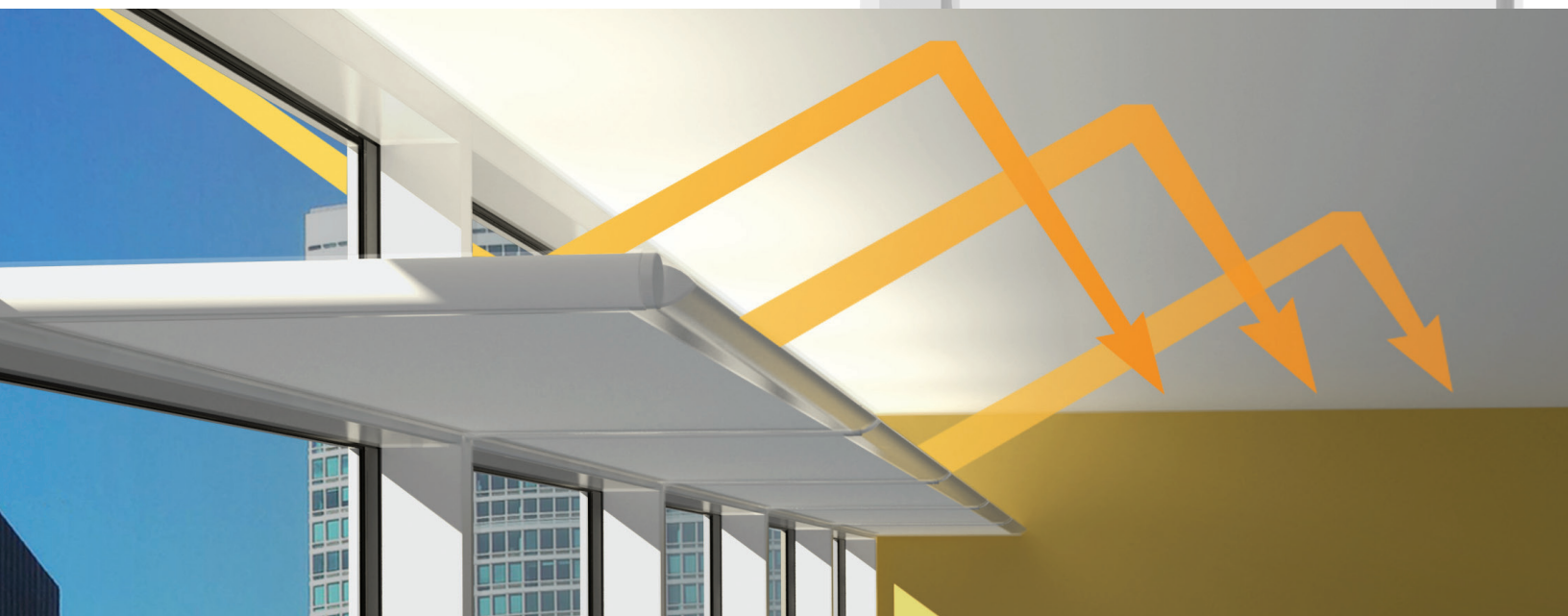
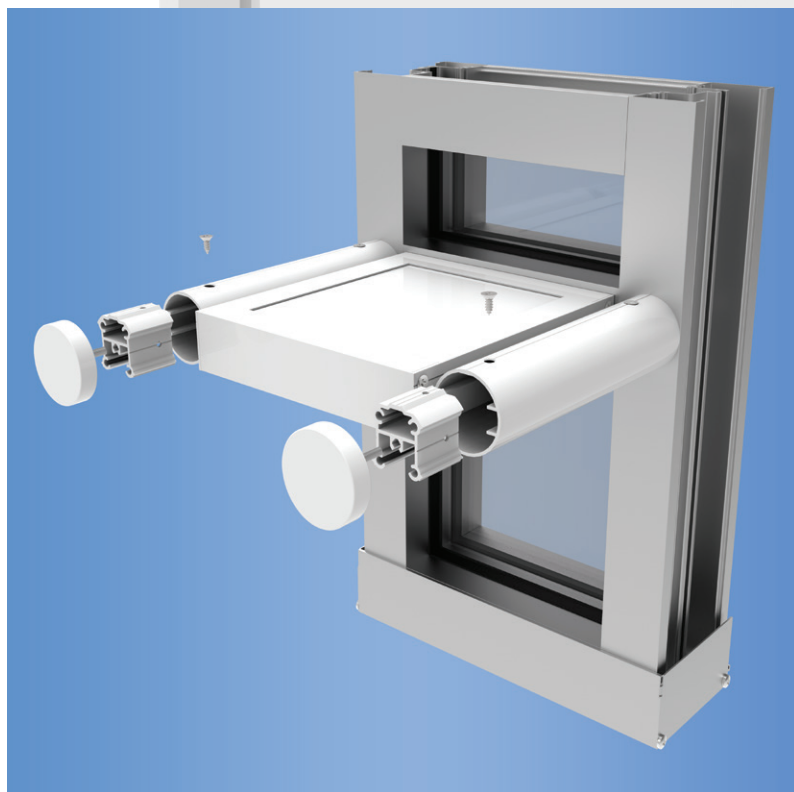
E9-3778
Bull Nose



E9-3778
Bullet



| Part # | Description |
|---------|-------------------------------|
| E9-3771 | Jamb Strut |
| E1-3772 | Intermediate Strut |
| E1-3890 | Shear Block |
| E1-3894 | Medallion End Piece |
| E9-3775 | Exterior Trim |
| E9-3775 | Interior Trim (Square) |
| E9-3777 | Interior Trim (Quarter-Round) |
| E9-3778 | Interior Trim (Bull Nose) |
| E9-3779 | Interior Trim (Bullet) |
| E1-3899 | Cleaning Pivot |
| HE-1000 | Pivot Lock Nut |





View our **Product Guide** or log on **myTechLink** to view CAD details, installation instructions, BIM/Revit 3D models, product sheets and CSI specifications.

YKK AP Locations

www.ykkap.com



Headquarters

Offices 101 Marietta St NW, Suite 2100, Atlanta, GA 30303 **Tel:** (678) 838-6000 **Fax:** (678) 838-6001

Sales & Manufacturing Centers

| | | | | |
|--------------------|--|----------------------------|----------------------------|--|
| Cincinnati | 8748 Jacquemin Dr, Suite 400, West Chester, OH 45069 | Tel: (513) 942-7200 | Fax: (513) 682-2123 | cincinnati@ykkap.com |
| Dallas | 346 E. Belt Line Rd, Suite 600, Coppell, TX 75019 | Tel: (469) 528-6900 | Fax: (469) 528-6907 | dallas@ykkap.com |
| Los Angeles | 10750 7th St, Suite 102, Rancho Cucamonga, CA 91730 | Tel: (909) 219-6597 | Fax: (909) 354-3170 | la@ykkap.com |

Branches

| | | | | |
|-------------------|--|----------------------------|----------------------------|--|
| Atlanta | 8140 Troon Cir, Suite 110, Austell, GA 30168 | Tel: (678) 945-6190 | Fax: (678) 945-6328 | atlanta@ykkap.com |
| Baltimore | 6670 Business Pkwy, Suite 104, Elkridge, MD 21075 | Tel: (410) 796-1001 | Fax: (410) 796-2031 | baltimore@ykkap.com |
| Chicago | 1000 Stevenson Ct, Suite 101, Roselle, IL 60172 | Tel: (630) 582-9602 | Fax: (866) 955-2441 | chicago@ykkap.com |
| Greensboro | 4524 Green Point Dr, Suite 106, Greensboro, NC 27410 | Tel: (336) 665-1963 | Fax: (336) 665-1965 | greensboro@ykkap.com |
| Houston | 5300 Hollister Rd, Suite 320, Houston, TX 77040 | Tel: (713) 329-9551 | Fax: (713) 939-0811 | houston@ykkap.com |
| Orlando | 7608 Currency Dr, Orlando, FL 32809 | Tel: (407) 856-0660 | Fax: (407) 856-0090 | orlando@ykkap.com |